

INDEX OF SHEETS

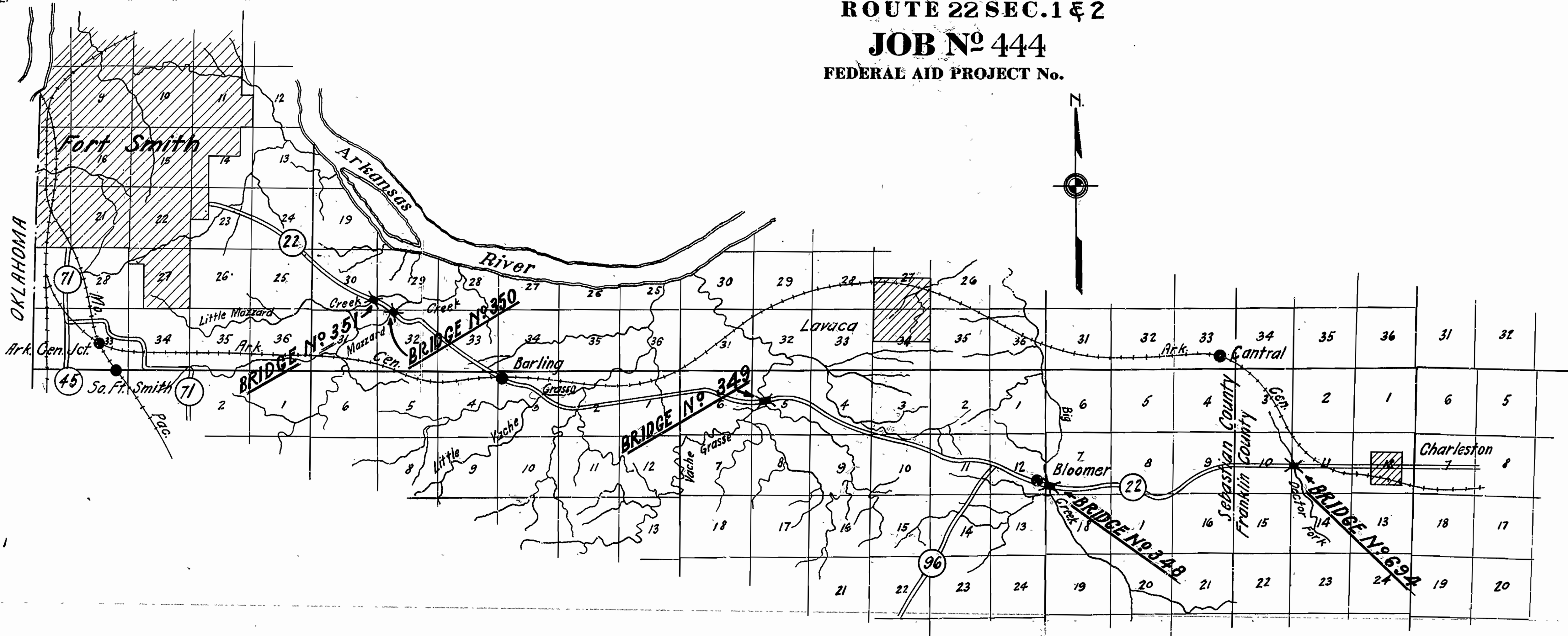
Sheet No.	Dwg. No.	Title
1.	660	Title Sheet
2.	661	Layout Bridge 694
3.	662	Details " "
4.	663	Details " "
5.	664	Layout Bridge 348
6.	665	Arch Details Br. 348
7.	666	Details of East Approach Br. 348
8.	667	" " West
9.	668	Layout Bridge 349
10.	669	Arch Details Br. 349
11.	670	Details of Approaches Br. 349
12.	671	Layout Bridge 350
13.	672	Details of Substructures Br. 350
14.	179	Details of 35' R. C. D. Girder Span
15.	673	Layout Bridge 351
16.	674	Details of East Approach Br. 351
17.	675	" " West
18.	178	Details of 30' R. C. D. Girder Span
19.		Plan - Profile Approach to Br. 694
20.		
21.		Cross Sections " " "
22.		" " " " "

STATE OF ARKANSAS
STATE HIGHWAY DEPARTMENT

PLAN OF PROPOSED BRIDGES
ON
FT. SMITH-CHARLESTON RD.
SEBASTIAN AND FRANKLIN COUNTIES
ROUTE 22 SEC. 1 & 2
JOB NO 444
FEDERAL AID PROJECT No.

QUANTITIES

No 12 - Earth excavation	8854	C.Y.
No 12 - Loose Rock excavation	408	C.Y.
No 12 - Solid Rock excavation	1244	C.Y.
No 13 - Dry excavation for structures	1390	C.Y.
No 13 - Wet " " "	935	C.Y.
S. R. - Solid Rock excavation for struct.	207.3	C.Y.
No 54 - Class B Concrete	1084.78	C.Y.
No 54 - " " " "	380.38	C.Y.
No 54 - " " " "	899.41	C.Y.
No 55 - Reinforcing Steel	317,745	Lbs.
No 69 - Rip Rap 1 foot thick	150	Sq. Yd.
No 74 - Concrete Railing for structures	1635	Lin. Ft.
No 11 - Clearing	2.0	Ac.
No 11 - Grubbing	1.3	Ac.



LAYOUT
Scale: 1" = 1 Mi.

GROSS LENGTH OF PROJECT 2700' = 0.511 Mi.
NET LENGTH OF PROJECT 2700' = 0.511 Mi.

APPROVED: [Signature]
COMMISSIONER, STATE LANDS, HIGHWAYS AND IMPROVEMENTS

APPROVED: [Signature]
STATE HIGHWAY ENGINEER

RECOMMENDED FOR APPROVAL: [Signature]
DISTRICT ENGINEER, U.S. BUREAU OF PUBLIC ROADS

RECOMMENDED FOR APPROVAL: [Signature]
CHIEF ENGINEER, U.S. BUREAU OF PUBLIC ROADS

APPROVED: [Signature]
DIRECTOR, U.S. BUREAU OF PUBLIC ROADS

BRIDGE ENGINEER

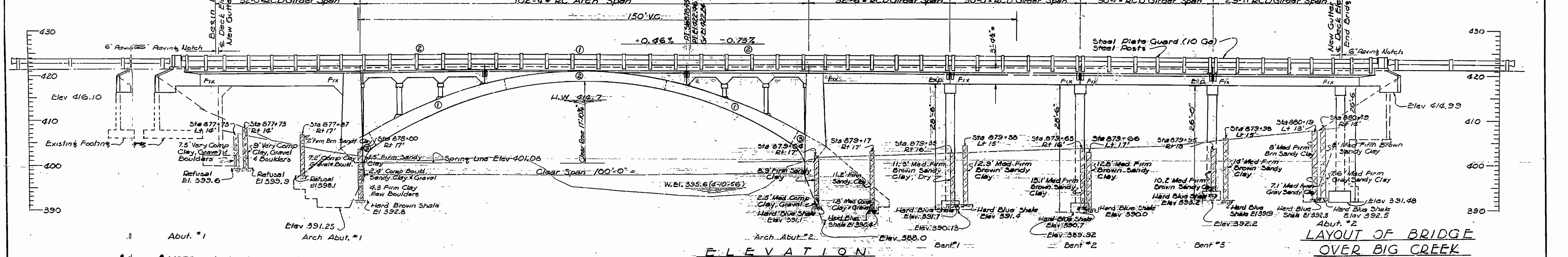
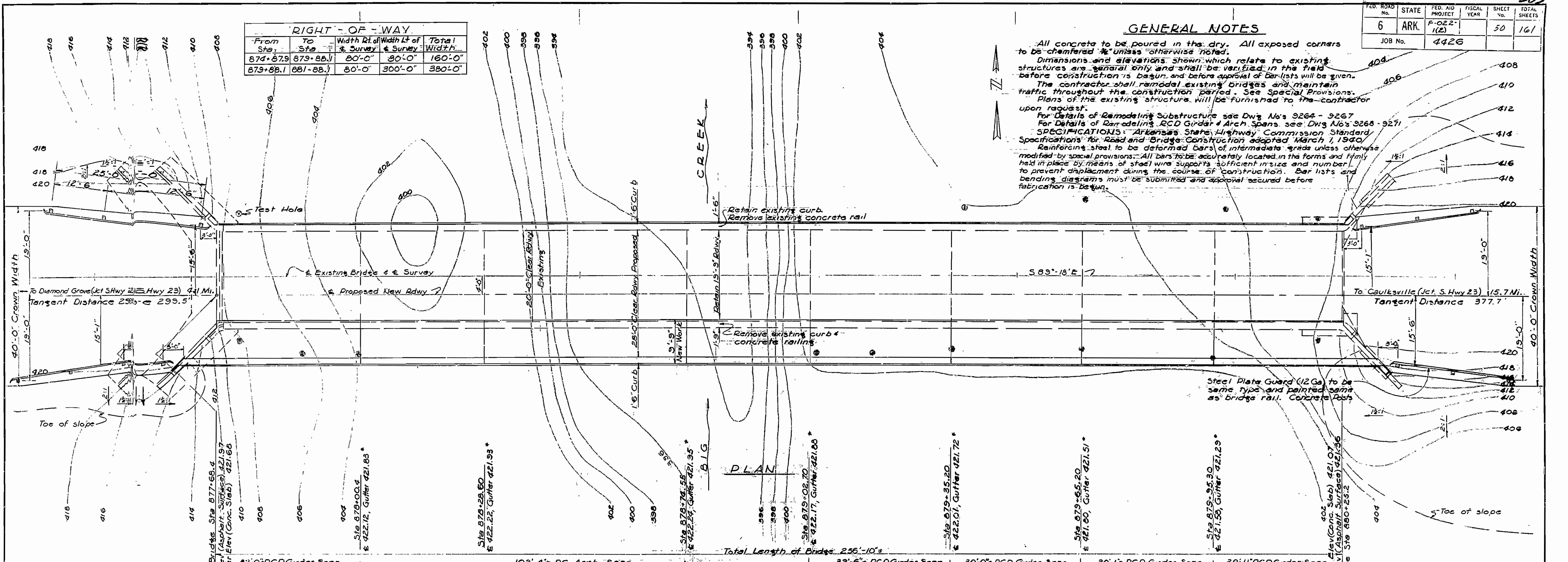
BRIDGES NO. 694, 348, 349, 350, 351 DRAWING NO. 660

FED. ROAD No.	STATE	FED. AID PROJECT	FISCAL YEAR	SHEET No.	TOTAL SHEETS
6	ARK.	F-022-112		50	161
JOB No.		4426			

GENERAL NOTES

All concrete to be poured in the dry. All exposed corners to be chamfered unless otherwise noted.
 Dimensions and elevations shown which relate to existing structures are general only and shall be verified in the field before construction is begun and before approval of Bar lists will be given.
 The contractor shall remodel existing bridges and maintain traffic throughout the construction period. See Special Provisions. Plans of the existing structure will be furnished to the contractor upon request.
 For Details of Remodeling Substructure see Dwg No's 9264 - 9267
 For Details of Remodeling RCD Girder & Arch Spans see Dwg No's 9268 - 9271
 SPECIFICATIONS: Arkansas State Highway Commission Standard Specifications for Road and Bridge Construction adopted March 1, 1940
 Reinforcing steel to be deformed bars of intermediate grade unless otherwise modified by special provisions. All bars to be accurately located in the forms and firmly held in place by means of steel wire supports sufficient in size and number to prevent displacement during the course of construction. Bar lists and bending diagrams must be submitted and approval secured before fabrication is begun.

RIGHT-OF-WAY				
From Sta.	To Sta.	Width of Survey	Width of Survey	Total Width
874+87.9	879+88.1	80'-0"	80'-0"	160'-0"
879+88.1	881+88.1	80'-0"	300'-0"	380'-0"



LAYOUT OF BRIDGE OVER BIG CREEK CAMP CHAFFEE - FRANKLIN CO. LINE RECONSTRUCTION SEBASTIAN COUNTY ROUTE 22 SEC. 1

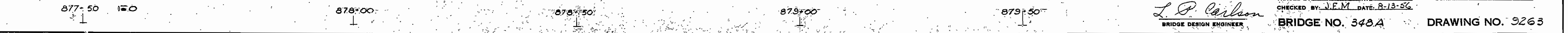
ARKANSAS STATE HIGHWAY COMMISSION
 LITTLE ROCK, ARK.

DRAWN BY: *LB* DATE: 7-18-56
 TRACED BY: *JEM* DATE: 8-13-56
 CHECKED BY: *JEM* DATE: 8-13-56
 BRIDGE NO. 348A DRAWING NO. 3263

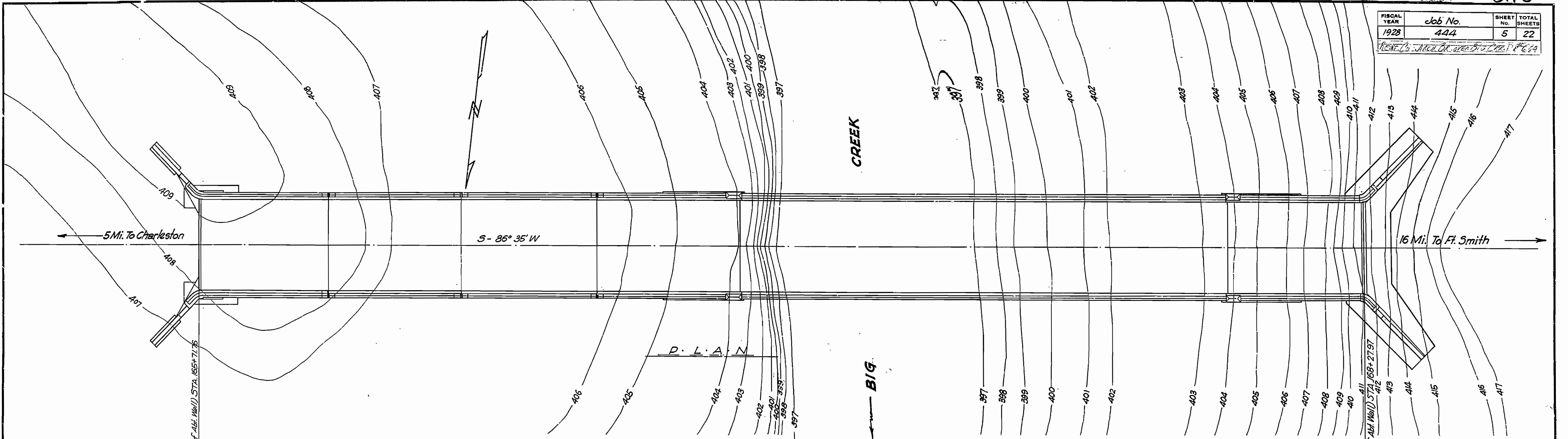
ARCH RIB AND DECK POURING SCHEDULE
 The arch rib and deck are to be poured in the order shown. Pours bearing the same number shall be made simultaneously.
 The key sections #3 at spring line shall not be made until adjacent pours have cured at least 36 hours.

DESIGN SPECIFICATION AASHTO 1953

Design Live Load: *oad*
 Unit Stresses: C = Class A Concrete (n=15) H-20
 S = Class S Concrete (n=10) 840 psi
 R = Reinforcing Steel 20,000 psi

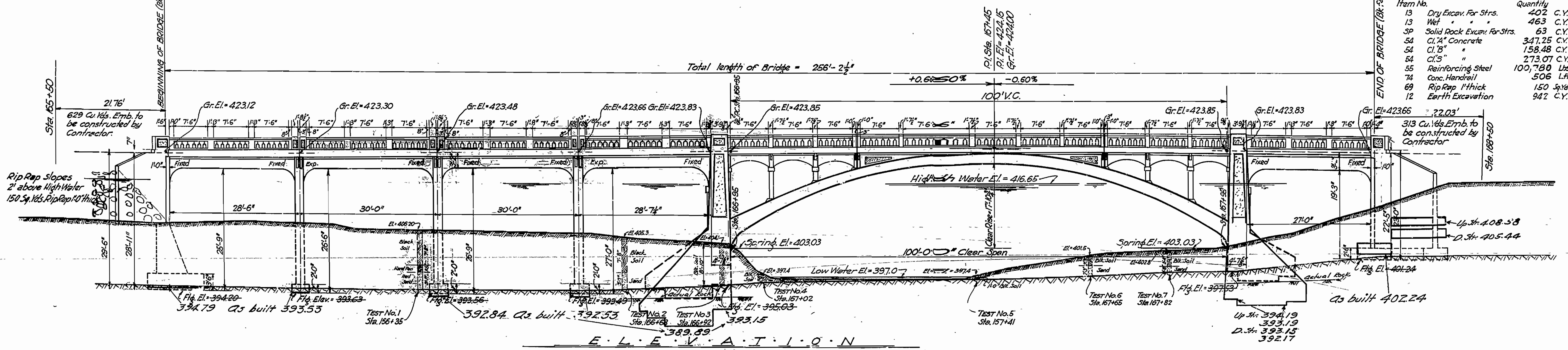


FISCAL YEAR	Job No.	SHEET No.	TOTAL SHEETS
1928	444	5	22



QUANTITIES FOR BR. 348

Item No.	Description	Quantity
13	Dry Excav. For Strs.	402 C.Y.
13	Wet	463 C.Y.
54	Solid Rock Excav. For Strs.	63 C.Y.
54	CL "A" Concrete	347.25 C.Y.
54	CL "B" "	158.48 C.Y.
54	CL "S" "	273.07 C.Y.
55	Reinforcing Steel	100,780 Lbs.
74	Conc. Handrail	506 Lf.
69	Rip Rap 1" thick	150 Sq. Yds.
12	Earth Excavation	942 C.Y.



E . L . E . V . A . T . I . O . N

B.M. Nail in root of 20" Elm - 50' left of Sta. 168+30 El. = 410.73

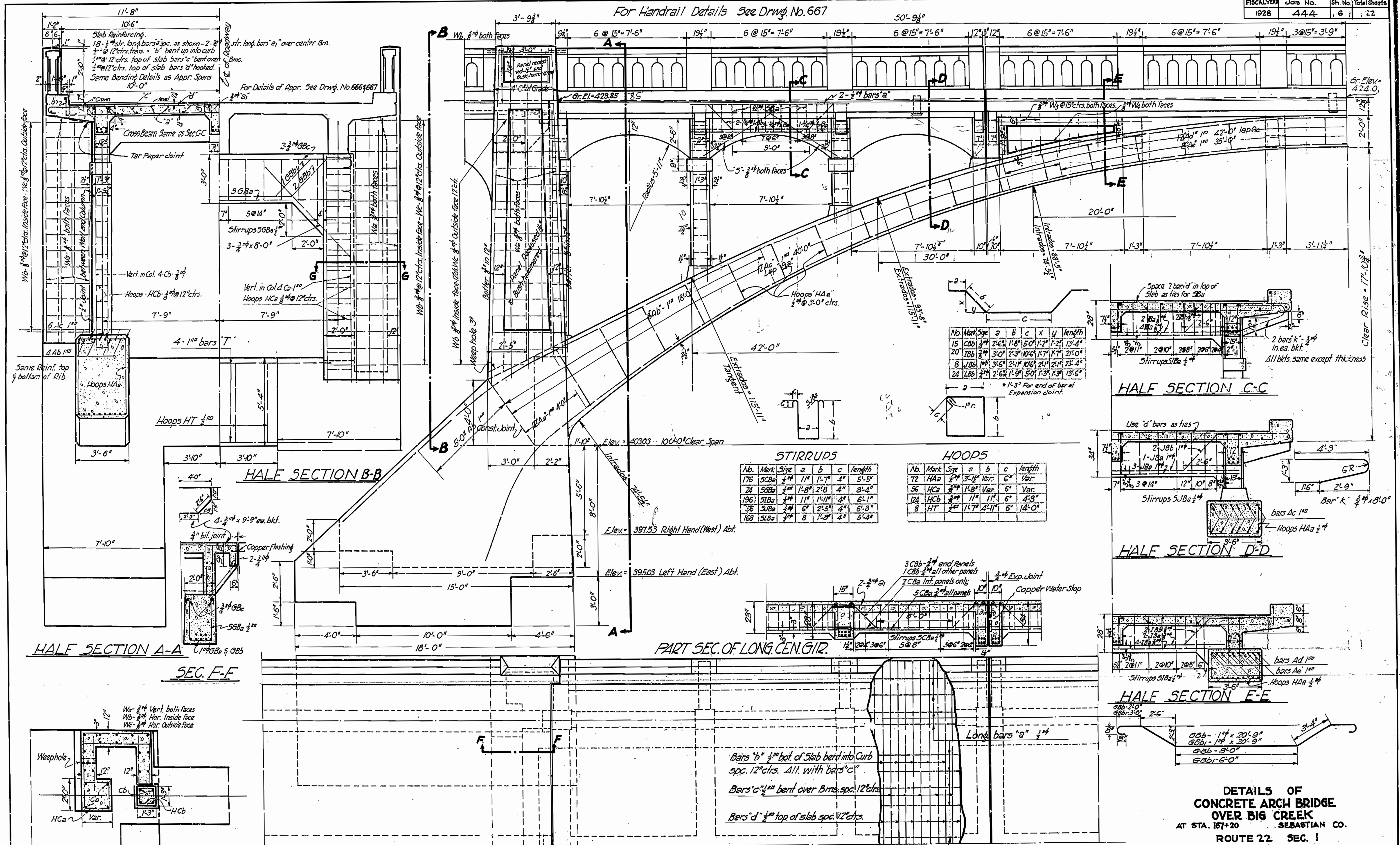
SEE DRAWINGS No. 665-666 & 667 FOR DETAILS.

Revised 12-16-31
Actual footing elevations

LAY OUT OF
REINFORCED CONCRETE ARCH BRIDGE
OVER BIG CREEK
ROUTE 22 SEC. 1
ARKANSAS STATE HIGHWAY DEPARTMENT
LITTLE ROCK, ARK.

Drawn By: [Signature] Date: 3-3-22
Traced By: [Signature] Date: 3-3-22
Checked By: [Signature] Date: [Blank]
Scale: 1" = 10 ft.
BRIDGE NO. 348 DRAWING NO. 664

For Handrail Details See Drwg. No. 667



STIRRUPS

No.	Mark	Size	a	b	c	length
176	SCB _a	3/4"	11"	15"	4"	5'-5"
24	50B _a	3/4"	11"	15"	4"	8'-4"
196	51B _a	3/4"	11"	14 1/2"	4"	6'-1"
35	51B _a	3/4"	6"	2'-5"	4"	6'-8"
168	51B _a	3/4"	8"	1'-8"	4"	5'-4"

HOOPS

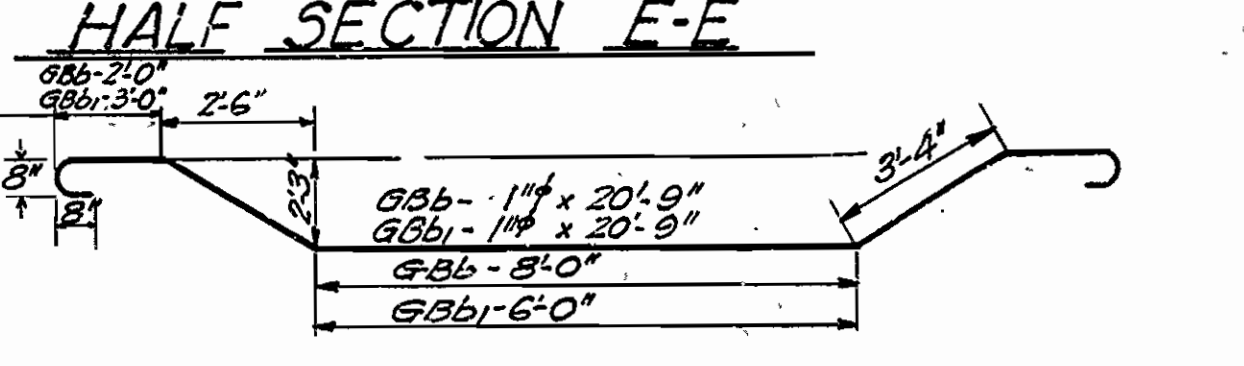
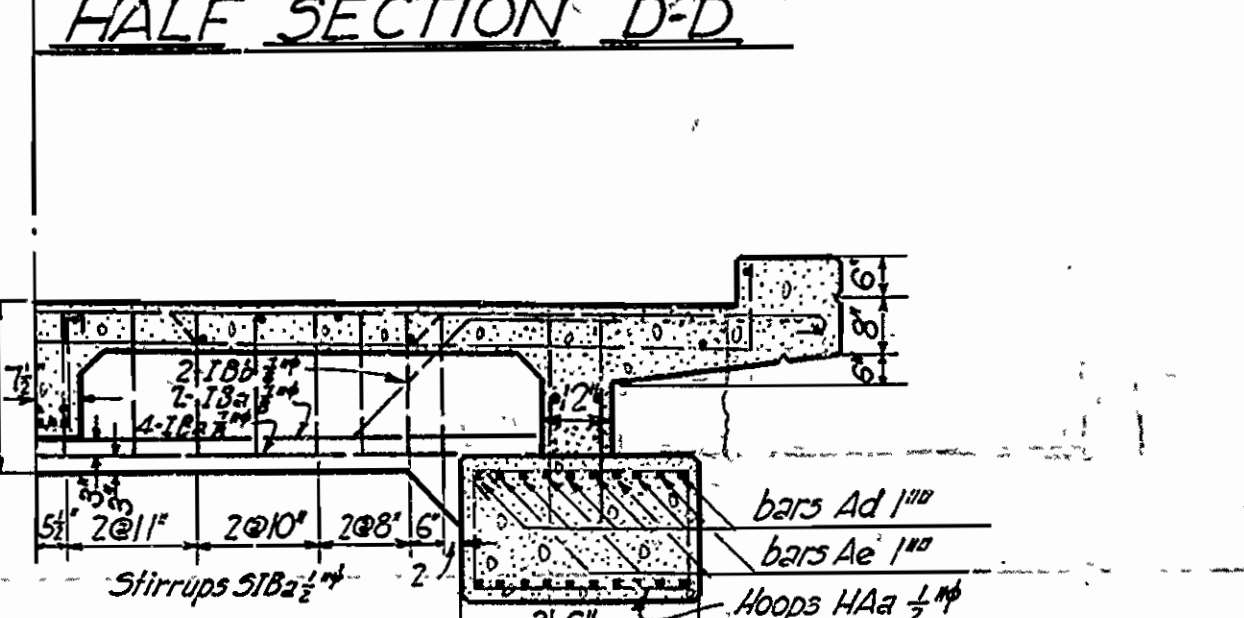
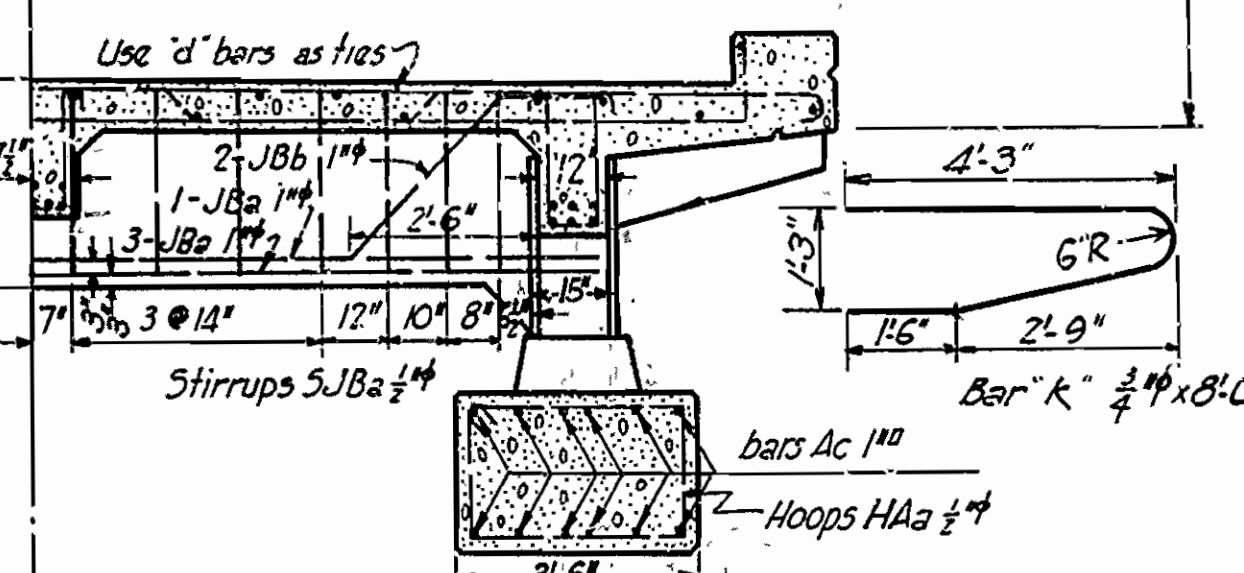
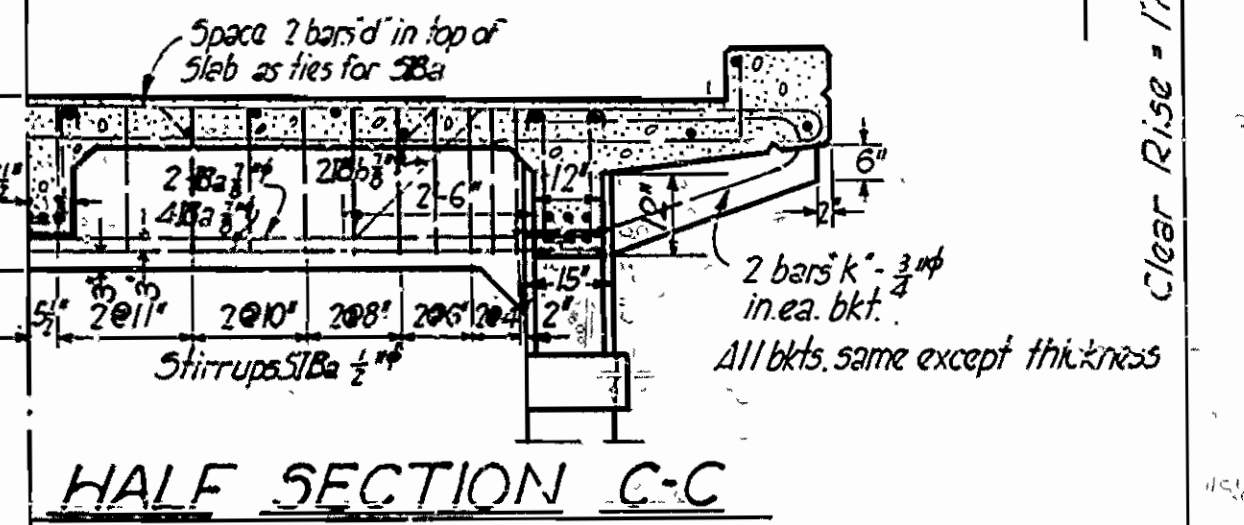
No.	Mark	Size	a	b	c	length
72	HAA	3/4"	3'-14"	15'	6"	Var.
56	HCB	3/4"	11'-8"	Var.	6"	Var.
124	HCB	3/4"	11"	11'	6"	4'-3"
8	HT	3/4"	11'-7"	11'	6"	14'-0"

QUANTITIES FOR ARCH SPAN

Structural Excavation C.Y.			Concrete C.Y.			Reinf. Steel Tons	Hand-rail in. ft.
Dry	Wet	Solid Rock	C1.7	C1.8	C1.5		
135	105	47	135.43	158.48	106.87	42,630	203

PART PLAN

GENERAL NOTES: (See also General Notes on Drwg. No. 666)
 Arch footings shall be founded at such elevations as to give at least 20" in sound rock at the rear face. The excavation shall be done in a manner to avoid shattering the rock faces. Arch rib to have 1/2" chamfer. Other exposed edges to have 3/4" chamfer except as noted.
 Plans showing falsework for the arch and the proposed order of concreting must be submitted by the Contractor for approval before construction of the arch begins.



DETAILS OF CONCRETE ARCH BRIDGE OVER BIG CREEK AT STA. 167+20 SEBASTIAN CO. ROUTE 22 SEC. 1

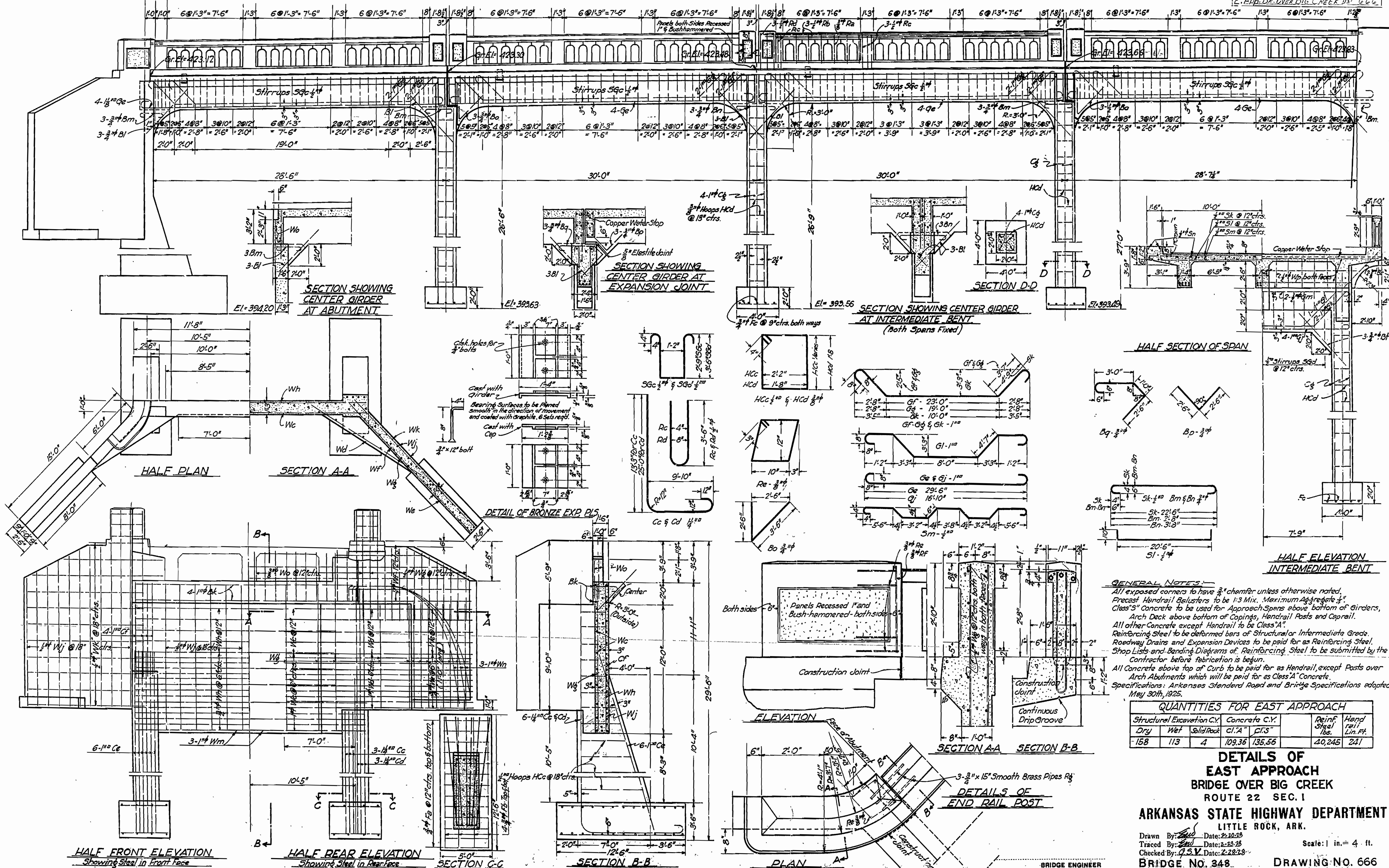
ARKANSAS STATE HIGHWAY DEPARTMENT
 LITTLE ROCK, ARK.

Drawn By: [Signature] Date: 12-21-27
 Traced By: [Signature] Date: 12-21-27
 Checked By: [Signature] Date: 2-29-28

BRIDGE No. 348 DRAWING No. 665

FISCAL YEAR	Job No.	SHEET	TOTAL SHEETS
1928	444	7	22

E. APP. BR. OVER BIG CREEK DET. 666



GENERAL NOTES:
 All exposed corners to have $\frac{3}{8}$ " chamfer unless otherwise noted.
 Precast Handrail Belusters to be 1:3 Mix. Maximum Aggregate $\frac{3}{4}$ "
 Class "S" Concrete to be used for Approach Spans above bottom of Girders,
 Arch Deck above bottom of Copings, Handrail Posts and Coprail.
 All other Concrete except Handrail to be Class "A".
 Reinforcing Steel to be deformed bars of Structural or Intermediate Grade.
 Roadway Drains and Expansion Devices to be paid for as Reinforcing Steel.
 Shop Lists and Bending Diagrams of Reinforcing Steel to be submitted by the
 Contractor before fabrication is begun.
 All Concrete above top of Curb to be paid for as Handrail, except Posts over
 Arch Abutments which will be paid for as Class "A" Concrete.
 Specifications: Arkansas Standard Road and Bridge Specifications adopted
 May 30th, 1925.

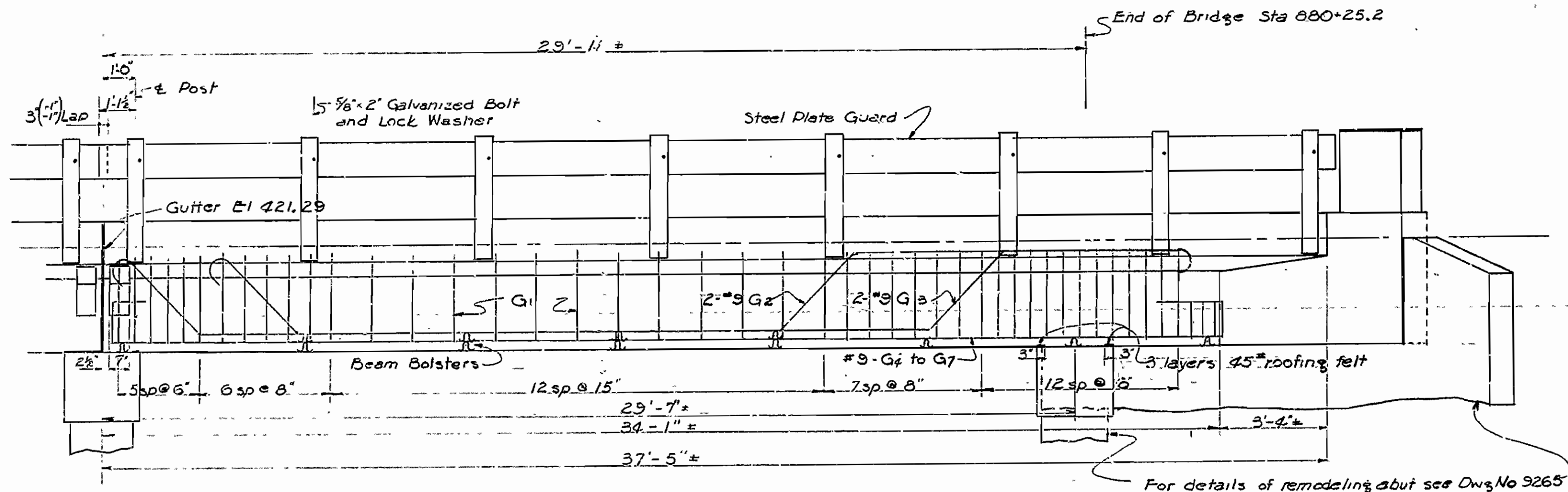
QUANTITIES FOR EAST APPROACH

Structural Excavation C.Y.	Concrete C.Y.	Reinf. Steel lbs.	Hand Rail Lin. Ft.			
Dry	Wet	Solid Rock	cl. A	cl. S		
158	113	4	109.36	135.56	40,245	241

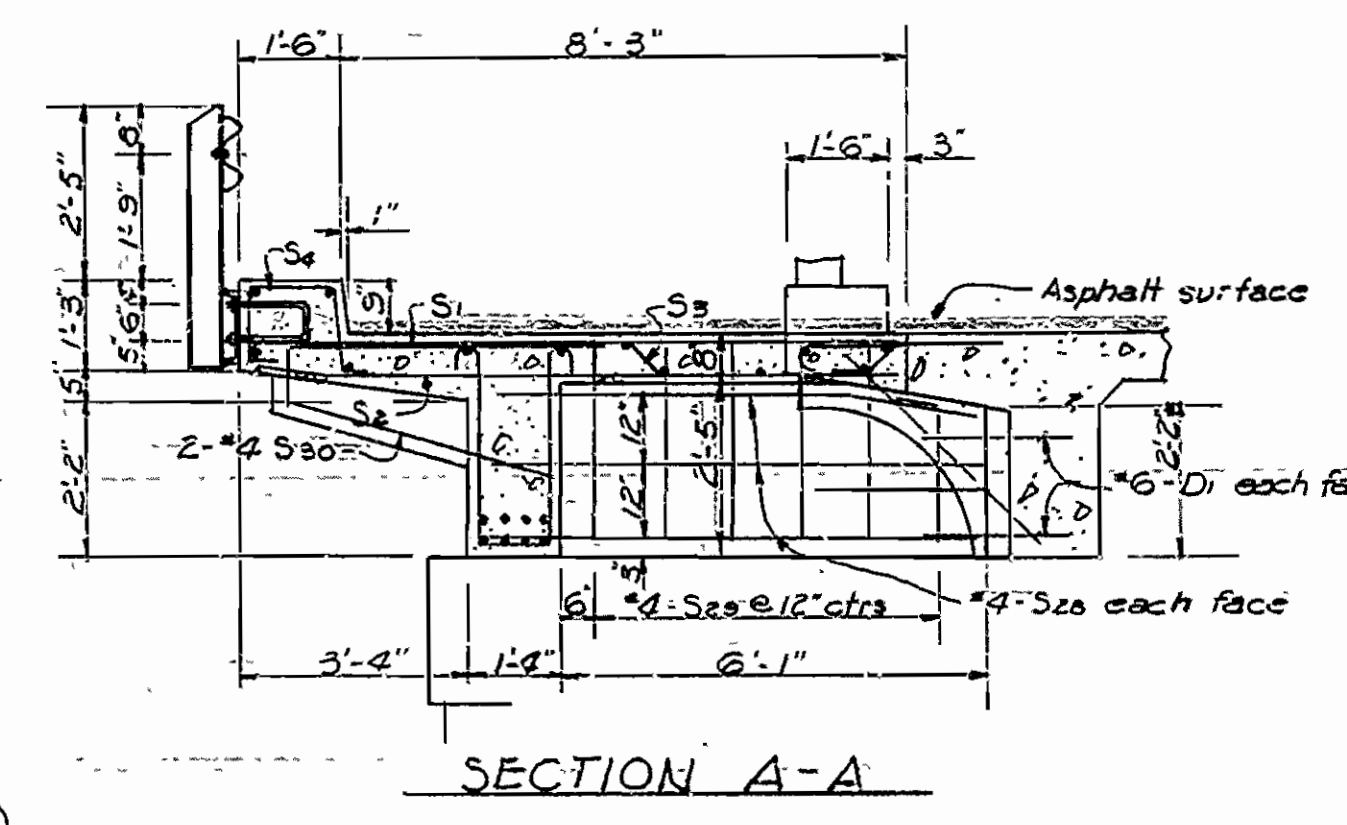
DETAILS OF EAST APPROACH BRIDGE OVER BIG CREEK ROUTE 22 SEC. 1
ARKANSAS STATE HIGHWAY DEPARTMENT
 LITTLE ROCK, ARK.
 Drawn By: *[Signature]* Date: 2-10-28
 Traced By: *[Signature]* Date: 2-23-28
 Checked By: *[Signature]* Date: 2-28-28
 Scale: 1 in. = 4 ft.
BRIDGE NO. 348 DRAWING NO. 666

BRIDGE ENGINEER

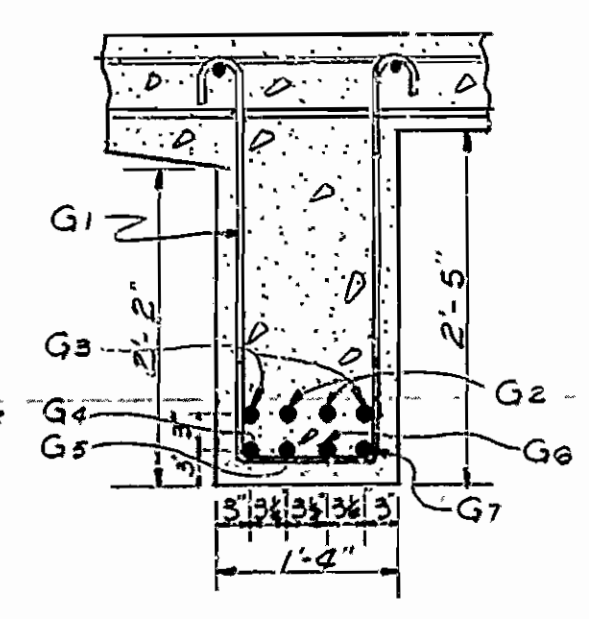
FED. ROAD No.	STATE	FED. AID PROJECT	FISCAL YEAR	SHEET NO.	TOTAL SHEETS
6	ARK.	F-022-1(2)		58	161
JOB No.		4426			



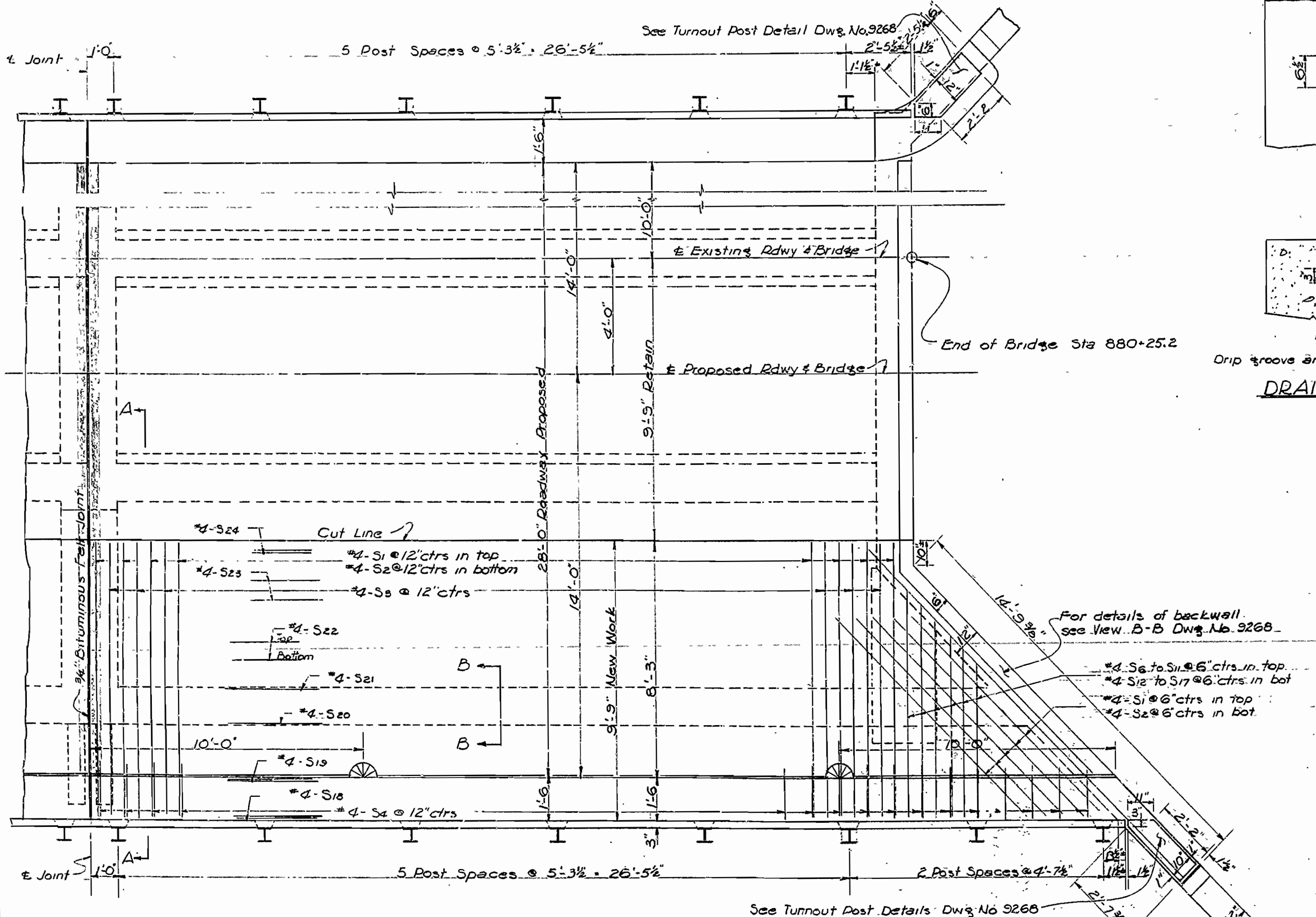
SOUTH ELEVATION



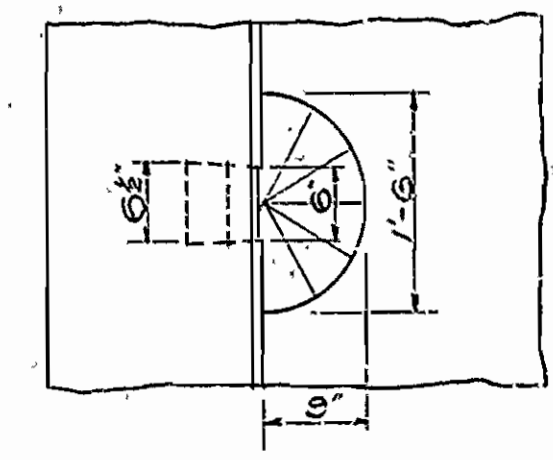
SECTION A-A



SECTION B-B
Scale 3/4"=1'-0"



PLAN



DRAIN DETAILS
Scale 3/4"=1'-0"

NOTES FOR R.C.D. GIRDER SPANS AND ARCH SPANS

All concrete to be Class S except columns and arch ring in arch span which is to be Class A.

Steel Plate Guard shall be of the type shown or an equivalent rigid type as approved by the Engineer. The steel plate guard including all steel posts with fastenings and concrete turnout posts shall be paid for at the unit price bid per linear foot for Steel Plate Guard.

Volume of bituminous felt and roofing felt shall be measured and paid for as Class S Concrete for Bridges.

Expansion devices to be measured and paid for as Structural Steel in Beam Spans.

STRAIGHT BARS				BENT BARS					
MARK	SIZE	NO.	LENGTH	BENDING DIAGRAM	MARK	SIZE	NO.	"A"	LENGTH
S17	#4	1	Varies each	S1, S5-S11 4 PD	S1	#4	35	9'-6"	10'-0"
S18	#4	2	38'-3"	S3	S9	#4	29	-	9'-8"
S19	#4	2	37'-1"	3'-9" @ 5'-3 1/2"	S4	#4	37	-	5'-0"
S20	#4	1	54'-6"	S2	S6	#4	1	Varies	Varies
S21	#4	1	33'-2"	S4	S10	#4	1	Varies	Varies
S22	#4	2	32'-0"	S5	S11	#4	1	Varies	Varies
S23	#4	2	29'-6"	S6	S12	#4	1	Varies	Varies
S24	#4	2	29'-1"	S7	S13	#4	1	Varies	Varies
S25	#4	7	15'-6"	S8	S14	#4	1	Varies	Varies
S26	#4	3	4'-1"	S9	S15	#4	1	Varies	Varies
S27	#4	6	3'-8"	S10	S16	#4	1	Varies	Varies
S28	#4	6	7'-3"	S11	S17	#4	1	Varies	Varies
Di	#6	2	2'-6"	S12	S18	#4	3	8'-1"	8'-1"
To1	#5	6	4'-6"	S13	S19	#4	3	8'-4"	8'-4"

DETAILS OF REMODELING SPAN NO. 6 OF BRIDGE OVER BIG CREEK CAMP CHAFFEE-FRANKLIN CO. LINE RECONSTRUCTION SEBASTIAN COUNTY

ROUTE 22 SEC. 1.
ARKANSAS STATE HIGHWAY COMMISSION
 LITTLE ROCK, ARK.

DRAWN BY *L.P. Carlson* DATE 10-8-56
 TRACED BY *J.H.* DATE *10-15-56* SCALE 3/4"=1'-0"
 CHECKED BY *J.H.* DATE *10-15-56* Except as noted
 BRIDGE NO. 348 A DRAWING NO. 9271

L.P. Carlson
 BRIDGE DESIGN ENGINEER

FED. ROAD No.	STATE	FED. AID PROJECT	FISCAL YEAR	SHEET No.	TOTAL SHEETS
6	ARK.	-022-1(2)		33	161
JOB No.		-442G			

SCHEDULE OF BRIDGE QUANTITIES

BRIDGE NO. CODE NO.	ITEM NO.	ITEM	103		103	SP & 802	SP & 802	SP & 803	SP-805-G	807	929	SP	REMODELING EXISTING BRIDGE STRUCTURES
			DRY EXCAVATION FOR STRUCTURES	WET EXCAVATION FOR STRUCTURES	SOLID ROCK EXCAVATION FOR STRUCTURES	CLASS A CONCRETE FOR BRIDGES	CLASS S CONCRETE FOR BRIDGES	REINFORCING STEEL	STEEL PLATE GUARD (O.G.A.)	STRUCTURAL STEEL IN BEAM SPANS	BRIDGE NAME PLATES (TYPE C)	COMPLETE ITEM	
		UNIT OF BRIDGE	UNITS	CU. YD.	CU. YD.	CU. YD.	CU. YD.	CU. YD.	LB.	LIN. FT.	LB.	EACH	
3061 X031		Abutments No. 1 & 2	33	144	-	46.50	-	4832	-	-	-	-	
		One 37'7" I-Beam Span	-	-	-	-	14.95	2513	-	12348	1		
		Totals for Bridge No. 3061	33	144	-	46.50	14.95	7345	-	12348	1	5%	
3062 X031		Abutments No. 1 & 2	49	142	2	45.12	-	4718	-	-	-	-	
		One 33'11" I-Beam Span	-	-	-	-	13.46	2431	-	11010	1		
		Totals for Bridge No. 3062	49	142	2	45.12	13.46	7149	-	11010	1	4%	
349A X024		Abutments No. 1 & 2	52	13	4	28.17	-	3147	-	-	-	-	
		Bents No. 1 & 3	43	12	4	17.60	-	1932	-	-	-	-	
		Bent No. 2	18	13	1	8.64	-	1033	-	-	-	-	
		Arch Abutment No. 1	51	30	6	48.43	-	2169	-	-	-	-	
		Pier No. 1	11	20	9	33.31	2.98	3251	8.17	-	-	-	
		Arch Abutment No. 2	59	12	8	41.64	-	2014	-	-	-	-	
		30'-0" R.C.D. Girder Spans No. 1 & 5	-	-	-	-	44.83	5631	145.42	-	1	-	
		30'-0" R.C.D. Girder Span No. 2	-	-	-	-	18.40	2474	60.00	177	-	-	
		32'-8" R.C.D. Girder Span No. 3	-	-	-	-	19.75	2690	65.34	-	-	-	
		32'-5" R.C.D. Girder Span No. 4	-	-	-	-	18.92	2632	64.84	177	-	-	
		91'-1" R.C. Arch Span No. 1	-	-	-	27.67	46.34	11670	182.17	278	-	-	
	91'-2" R.C. Arch Span No. 2	-	-	-	27.67	46.57	11689	182.39	278	-	-		
	Totals for Bridge No. 349A	234	100	32	233.73	97.99	50392	708.27	910	1	70%		
348A X024		Abutment No. 1	5	-	-	0.94	-	62	-	-	-	-	
		Arch Abutment No. 1	57	3	12	41.66	-	2093	-	-	-	-	
		Arch Abutment No. 2	53	34	9	58.55	-	2580	-	-	-	-	
		Bents No. 1, 2, & 3	42	20	3	20.15	-	1975	-	-	-	-	
		Abutment No. 2	32	5	1	8.60	-	674	-	-	-	-	
		32'-0" R.C.D. Girder Span No. 1	-	-	-	-	16.52	2871	78.18	125	1	-	
		102'-4" R.C. Arch Span No. 2	-	-	-	32.35	38.85	11853	204.67	697	-	-	
		32'-6" R.C.D. Girder Span No. 3	-	-	-	-	14.46	2298	65.00	233	-	-	
		30'-0" R.C.D. Girder Span No. 4	-	-	-	-	13.46	2124	60.00	106	-	-	
		30'-1" R.C.D. Girder Span No. 5	-	-	-	-	13.50	2124	60.18	125	-	-	
		29'-11" R.C.D. Girder Span No. 6	-	-	-	-	16.31	2460	74.00	106	-	-	
	Totals for Bridge No. 348A	189	62	25	162.25	113.70	31174	542.03	1392	1	21%		
	Totals for Job No. 442G	505	448	59	487.0	339.5	96000	1250.3	25660	4	100%		

SCHEDULE OF BRIDGE QUANTITIES
 CAMP CHAFFEE - FRANKLIN COUNTY LINE
 RECONSTRUCTION
 SEBASTIAN COUNTY
 ROUTE 22 SEC. 1

ARKANSAS STATE HIGHWAY COMMISSION
 LITTLE ROCK, ARK.

DRAWN BY: J.E.H. DATE: 12-14-56
 TRACED BY: DATE:
 CHECKED BY: L.E.M. DATE: 12-15-56

L.P. Carlson
 BRIDGE DESIGN ENGINEER

BRIDGE NO. 3061, 3062, 348A, 349A

DRAWING NO. 9246